

COMMUNITY SPOTLIGHT

Parent & Caregiver Fireside Chat

MARCH 2024

All In For 
Kansas Kids

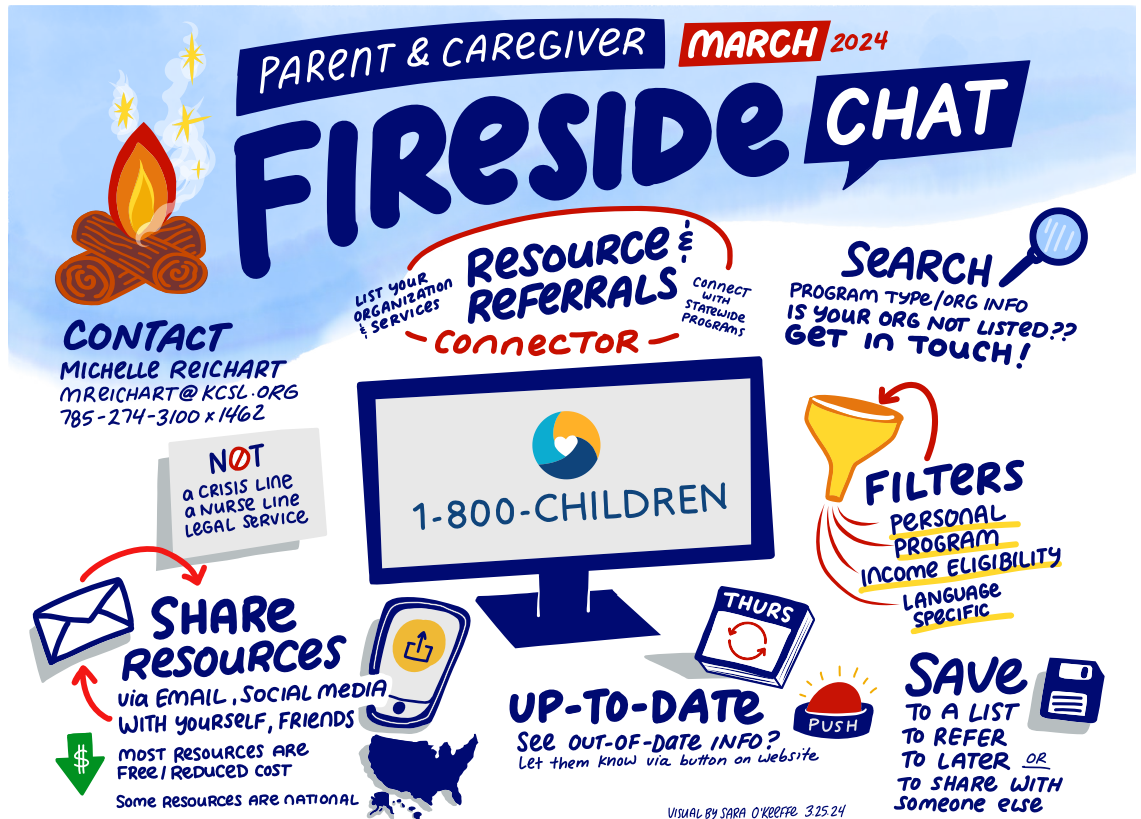
The Family Leadership Team, in alignment with the All In For Kansas Kids Strategic Plan, with support from the University of Kansas Center for Public Partnerships and Research (KU-CPPR) and Orange Sparkle Ball (OSB), hosted its first virtual Parent-Caregiver Fireside Chat, a space created to foster connection for parents and caregivers, learn about early childhood topics, and spark engaging conversation.

Eleven parents and caregivers from across the state came together to learn about [1-800-CHILDREN](https://www.1-800-children.org)

from KCSL Statewide Information and Resource Supervisor, Michelle Reichart. Parents and caregivers received valuable information about the call line and its online platform, including a virtual tutorial. Many parents and caregivers were engaged in asking questions, providing feedback and suggestions, and expressed interest in continued opportunities.

The next monthly Parent-Caregiver Fireside Chat will be held on Monday, April 22, 2024, and will discuss Developmental Health & Screenings with co-hosts, Kansas State Department of Education (KSDE) and the Kansas Department of Health and Environment (KDHE). Your presence and participation will enrich discussions and enhance family experiences across Kansas. If you are interested in participating, please click this link to register: bit.ly/FiresideApril22

If you are interested in being a part of the Family Leadership Team, please contact Cora Ungerer at cora.ungerer@ks.gov



FIRESIDE CHAT MARCH 2024

The University of Kansas Center for Public Partnerships and Research
Visual created by Sara O’Keeffe, March 2024

The visual notes drawn by Sara O’Keeffe depict the 1-800-CHILDREN website, a platform providing up-to-date, free and reduced cost statewide service programs and referrals for families. Search the website as an organization or individual with children based on your income eligibility, and language preference. The site includes ways to choose resources and save them for future use or share with others. If you are a program and you see that your information is not listed or out-of-date, or you have any questions, please get in touch with Michelle Reichart at mreichart@kcsl.org or call 785-274-3100.